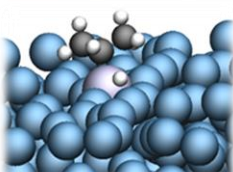
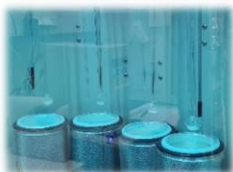
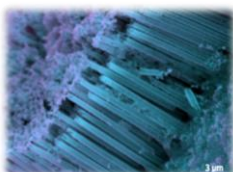
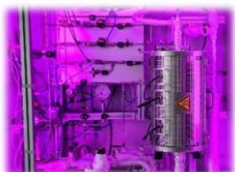
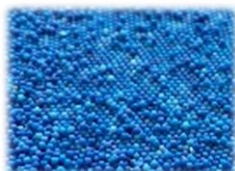
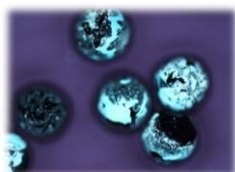


## Equal Opportunities Workshop: Giving and Accepting Constructive Feedback



### Why does it matter?

Constructive feedback is an essential tool when it comes to effectively and successfully cooperating in or leading teams in science!

### Content and impact

- Potentials and impact of feedback
- Giving constructive feedback with the W3-strategy
- Feedback simulation
- Feedback in line with personalities (Riemann-Thomann model)
- Professionally accepting feedback

### Coach

After studying humanities at the University of Tübingen, Dr. Isabel Werle first worked in adult education and public relations before returning to academia as a staff member in the Media and Communication field. She completed her doctorate at the TU Darmstadt and has been a self-employed trainer and coach since 2011. Her focus is on leadership, team development, communication and conflict management.

<https://www.entwicklungsraum-mainz.de>

### Contact:

SFB 1452 Geschäftsstelle

Friedrich-Alexander-Universität  
Erlangen-Nürnberg

Egerlandstr. 3  
91058 Erlangen

Friederike Agel  
CLINT Coordinator  
Email: [friederike.agel@fau.de](mailto:friederike.agel@fau.de)

[www.clint.fau.de](http://www.clint.fau.de)

### When and Where

Online-workshop

08 July 2025

9:00 – 16:00

Gefördert durch

**DFG** Deutsche  
Forschungsgemeinschaft

**FAU** Friedrich-Alexander-Universität  
Erlangen-Nürnberg